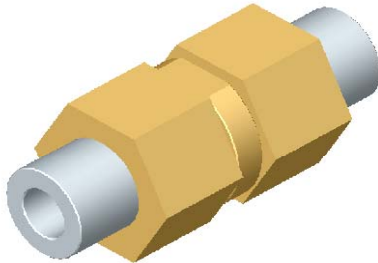


MPG 12 CV



- ▶ check valve
- ▶ main materials brass and monel
- ▶ seat material brass
- ▶ media inert gases / rare gases /
CO / O₂ / CO₂ / air
 other media on request
- ▶ suitable for high pressure oxygen service

technical data

- ▶ pressure range 0 - 420 bar
- ▶ connections BSP 1/2", NPT 1/2", SW 1/2"
- ▶ nominal diameter DN 12
- ▶ media temperature from - 40° C to + 80° C
- ▶ ambient temperature from - 40° C to + 60° C
- ▶ vacuum leak rate 10⁻⁶ mbar x l x s⁻¹
- ▶ flow direction A > B
- ▶ cracking pressure 0,25 bar
- ▶ Kv-value 7,5 m³/ h

- ▶ length 157 mm
- ▶ width SW 60 mm
- ▶ weight 3,0 kg

options with these valve types

- ▶ connections made to specification
- ▶ other options on request

technical drawings

